



جفرا
J a f r á

للإغاثة والتنمية الشبابية
For Relief and Youth Development

Needs Assessment

(Rashidieh camp)

2023

This survey summarizes the basic needs of the population in the Jafra Foundation's areas of work in Lebanon, to the intervention required to target the various groups of community to bridge the gap in the lack of basic services, trainings or projects needed by the residents of the Foundations areas of work:

- Identifying the demographic structure of the Foundation's areas of work in general (the population, the number of: IDPs, children, males, females, persons with disabilities, the unemployment rate for males, and the unemployment rate for females).
- Identifying the services in the Foundation's areas of work.
- Identifying the basic needs of food or non-food items in the Foundation's areas of work.
- Identifying the key sectors in the markets of the Foundation's areas of work and the challenges facing the population in accessing this market and the challenges faced by these sectors that prevent expansion and growth.
- Identify the conditions of education and the basic educational needs in the Foundation's areas of work.
- Identify the key professions in the Foundation's areas of work and what professions exist/non-exist and identify the possibility of coordination and cooperation with the owners of these professions.
- Studying the conditions of households and their income sources of in the Foundation's areas of work to identify the most basic needs of these families.
- A detailed study of the conditions of youth in the Foundation's areas of work to determine the most important vocational or developmental training needed, whether to help them in their studies, or to empower them economically to enable them to access the labor market.

Rashidieh Camp:



General Information:

Number of Population		IDPs	
11,000		550	
Children	Women	PWD	
40%	60%	2%	
Males' Unemployment		Females' Unemployment	
50%		60%	

Aids Provision in the Rashidieh Camp:



The organizations that offer food distribution:



The organizations that offer house rehabilitation aid:



Types of support and aid most requested by camp residents :

TYPES OF SUPPORT AND AID MOST REQUESTED



Financial Aid



Food Aid

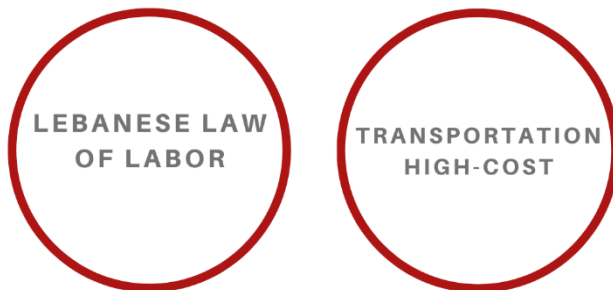
Majors that are studied most by the youth:

- ***Hairstyling***
- ***Mobile maintenance***
- ***General electricity***
- ***car electricity***
- ***tailoring***
- ***Air conditioner maintenance***
- ***Tourism and hotels industry***

Trainings that are desired most by the youth:

- ***Early childhood education***
- ***Hairstyling***
- ***Tourism and Hotels Industry***
- ***Nursery***

Most barriers that prevent young people from entering the labor market



The most important organizations specialized in providing development services to youth:



Reliable places that provide sports activities for youth within Rashidieh Camp:



Reliable places that provide recreational and development activities for youth within Rashidieh Camp:



Most challenges faced by the students in terms of completing their studies and obtaining a job are:

1. The cost of educational fees
2. Universities high tuition fees.
3. Gender-based wage gap

Youth in the Rashidieh Camp are with the idea of volunteering. The approximate number of youths who have previous volunteer experiences:



Organizations that provide volunteer opportunities for youth:



Most important employment conditions that employers want to be met by the job applicants in the Rashidieh Camp:



Criteria for accepting beneficiaries within education and psychosocial support programs in organizations that provide these services:



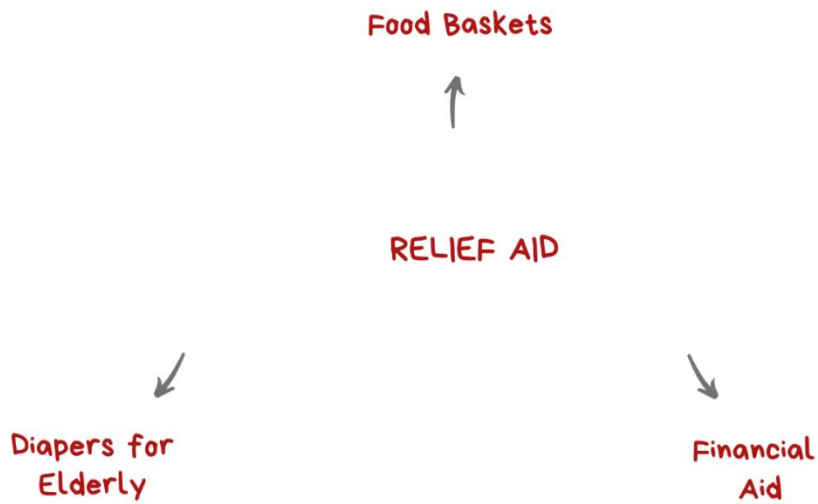
Criteria for accepting beneficiaries within the youth development and vocational training programs:

1. All nationalities
2. Education level
3. Ages are usually between 16-30

Criteria for accepting beneficiaries within the relief programs of the organizations that operate in Rashidieh Camp:

Criteria for accepting beneficiaries within the relief programs	
Nationality	<ul style="list-style-type: none">• Palestinian• Syrian• Lebanese
HH breadwinner	<ul style="list-style-type: none">• Breadwinner's age• Woman headed HH• Child headed HH
Health cases	<ul style="list-style-type: none">• Chronic Disease• Disability

Relief aid provided by the organizations:



Services provided by the non-governmental organizations in the camp:




Services in the camp:

Services in the camp	
Sanitation	Periodic malfunction
Cooking gas	Available
Electricity	2.5 amp: 75\$ 5 amp: 150\$ 10 amp: 250\$
Diesel	Available
Daily use water	Available
Potable water	Available
Internet	Available.
Bread	Available

Medical services in the camp:

Medical services	
Number of the medical centers	3
What are these centers?	<ul style="list-style-type: none"> • Hospitals: 1 • Clinics: 1 • Dispensaries: 1 • Mobile medical clinics: 0
Medical specialties available in the camp	<ul style="list-style-type: none"> • Pediatric care • Dental • General health • Ear, nose and throat • Ophthalmology • Urology • Neurology • Gynecology • Surgery • Dermatology
Medical specialties available in the camp	<ul style="list-style-type: none"> • Oncology • Cardiology • Nephrology

Households' ability to meet their basic food needs:


Average percentage of households able to meet their basic food needs	The reason behind households' inability to meet their basic food needs
 <p>A donut chart with a white center and a grey ring. The number '40%' is written in red in the center of the white circle.</p>	Lack of sufficient income

Community economy:

Households' income resources:

- *Agriculture*
- *Money orders*
- *Humanitarian aid*
- *Day work*

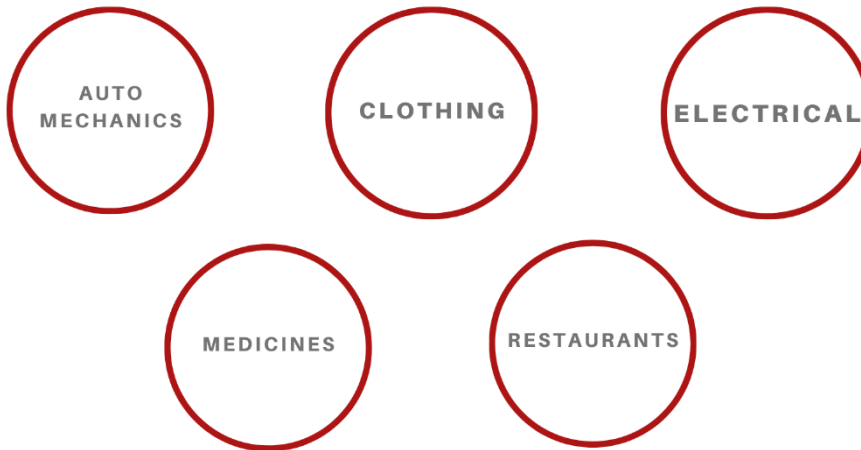
Market and supply in the camp:

Stores closure ratio	The reason behind stores closure
 <p>A donut chart with a white center and a grey ring. The number '35%' is written in red in the center of the white circle.</p>	<ul style="list-style-type: none">• Inability to make profit due to the depreciation of the local currency.• Insufficient money on HHs

Most challenges that store owners and merchants face in resupplying stores with goods:



Most basic goods and services that households purchase from outside the camp:



Livelihood in the Camp:

Most labor sectors existing in the camp:

1. Agriculture
2. Hair styling/cosmetology
3. Education/childcare
4. Humanitarian and social work
5. Tailoring
6. Daily work/seasonal work

Most challenges that people face to start a new business in the camp:

1. The lack of sufficient purchasing power among the members of the society
2. Company registration
3. legal issues
4. The lack of adequate training in the new field of work

Most productive sectors in the camp:



Most challenges facing the agricultural production sector in the camp:

1. High prices of raw materials
2. The lack of marketing of the products

What are the most cultivated crops in the camp?

1. Mallow
2. Parsley
3. Capsicum
4. Herbs

Crops required but not grown in the camp:

1. Citrus
2. Cereals of all kinds
3. Zucchini
4. Eggplant

Community support:

Organizations that provide paid/unpaid support to the popular starts		
Sport	Paid/unpaid	Organization name
Football	Paid	
Athletics	Paid	

The most common forms of child labor in the Rashidieh Camp:

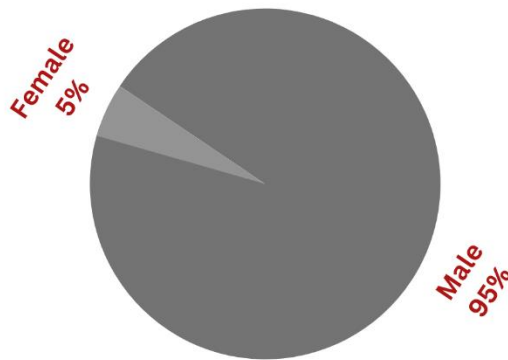
1. Shops
2. Workshops
3. Bakeries

Education in the Camp:

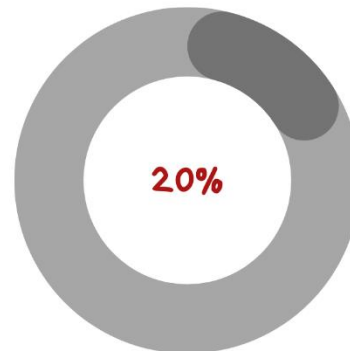
**AVERAGE CAPACITY
(FOR EACH SCHOOL/CLASSROOM)** → **350**
→ **30**

Education in the camp	
Kindergartens	6
Schools	3
Educational centers	4

Gender of children dropping out of school ratio



Children dropping out of school ratio



Age of children dropping out of school



Reasons for dropping out of school:

1. The family cannot afford to provide educational costs for the children
2. Both children and teachers suffer from psychological distress

Places that children who drop out of school go to:

1. Coffee shops
2. Video gaming halls
3. The street

Organizations that provide recreational, social and psychological support services for children, parents and youth:

